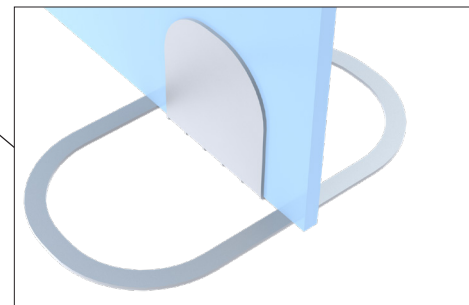
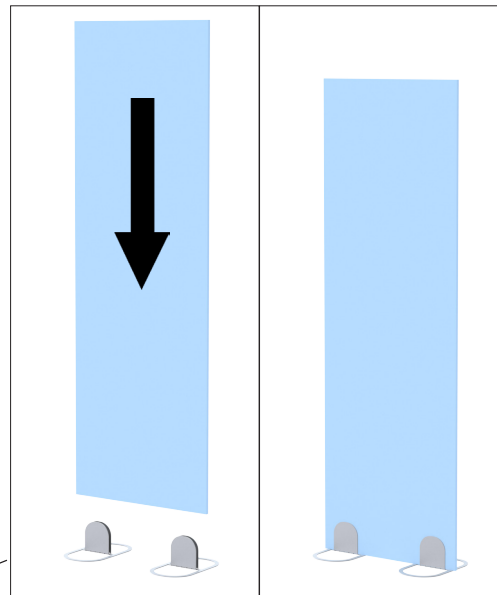
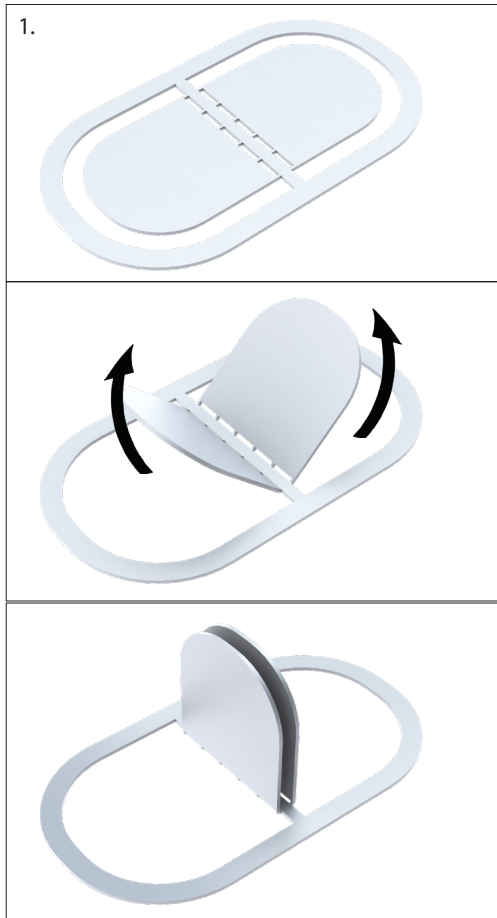


Double U Mount - UU Series

If you have finger, wrist, arm, or elbow issues, ask someone else to bend the base.

1. Use two hands to bend the base. With one hand, hold the outer rim farthest from you. With the other hand, slowly and carefully bend the flap farthest from you towards you as shown in the image below. Stop when the part is bent about 90 degrees.
2. Turn the base around so the flat flap is away from you and repeat Step #1
3. Adjust as needed. The goal is to bend each side up 90 degrees, with the opening no larger than the graphic. If you're not sure if you've bent the flaps enough or too much, try placing the graphic into the base after you've bent the base into shape. If the opening is wider than the graphic, remove the graphic and then push the sides closer together as needed, aiming to have the graphic point straight up. If the graphic won't fit, try to bend the flaps farther apart.
4. Repeat steps 1-3 on the second base.
5. Check to see if the graphic stands up straight. If not, you can remove the graphic, then slowly and carefully adjust the bend angles as needed.

IMPORTANT: After bending into shape, leave it bent. Do NOT reflatten the unit as repeated flattening and bending will weaken the steel and will cause the part to break. This unit is designed for graphics up to 24" W x 72" H in an indoor setting with lightweight graphics that hold up their own weight without bowing.



UU2-S shown